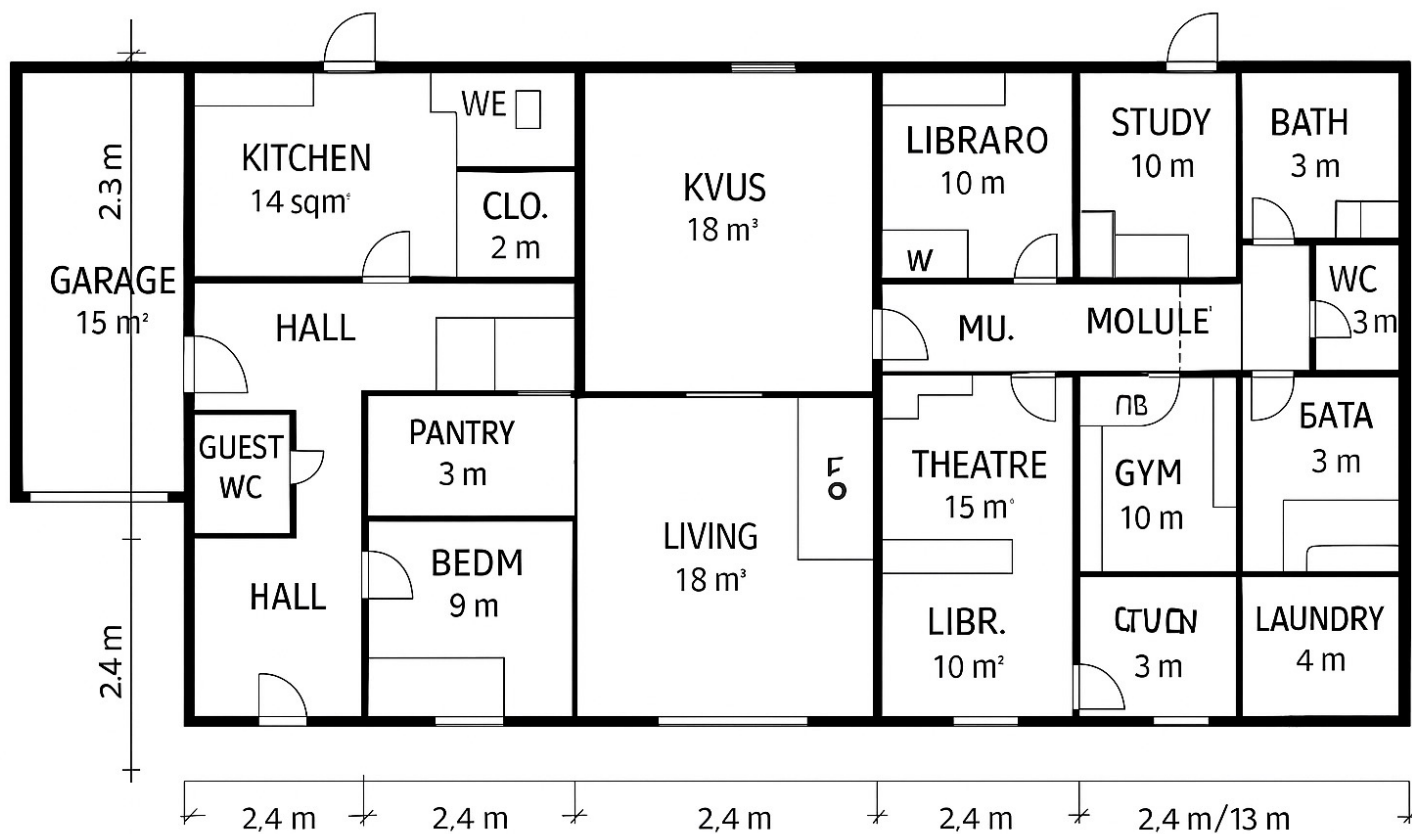




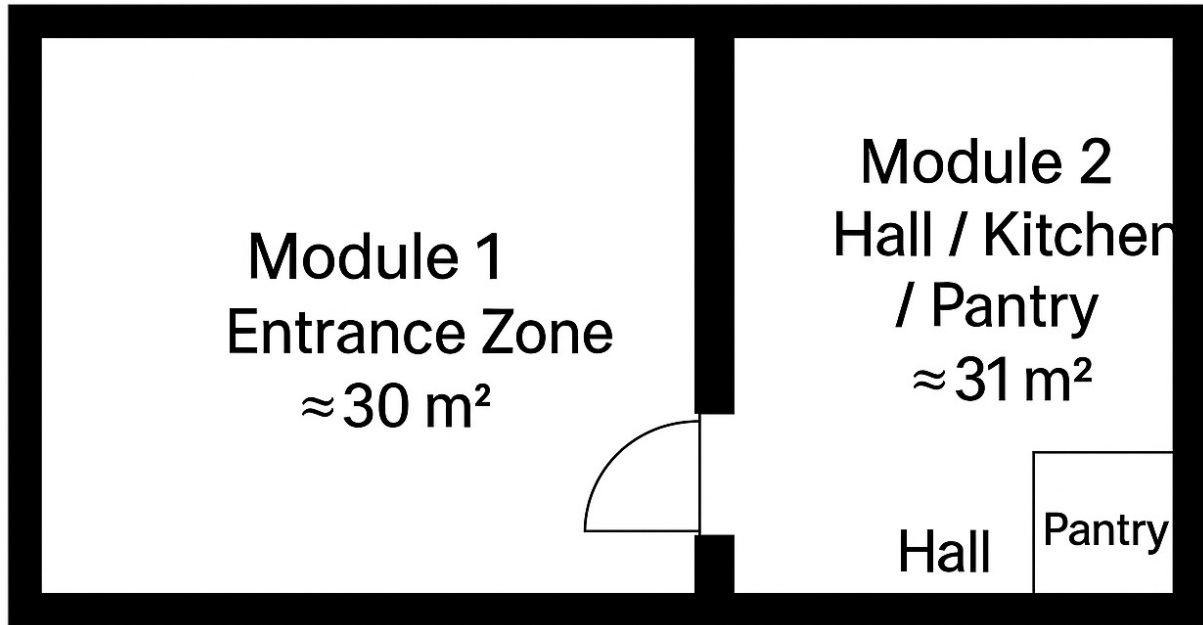
**GDB Passive House** modular home — **250 m<sup>2</sup>**



**GDB Passive House** modular home — **250 m<sup>2</sup>**



MODULE 1 – 250 M<sup>2</sup> (2,4m) = inm Mc6/60 M24)



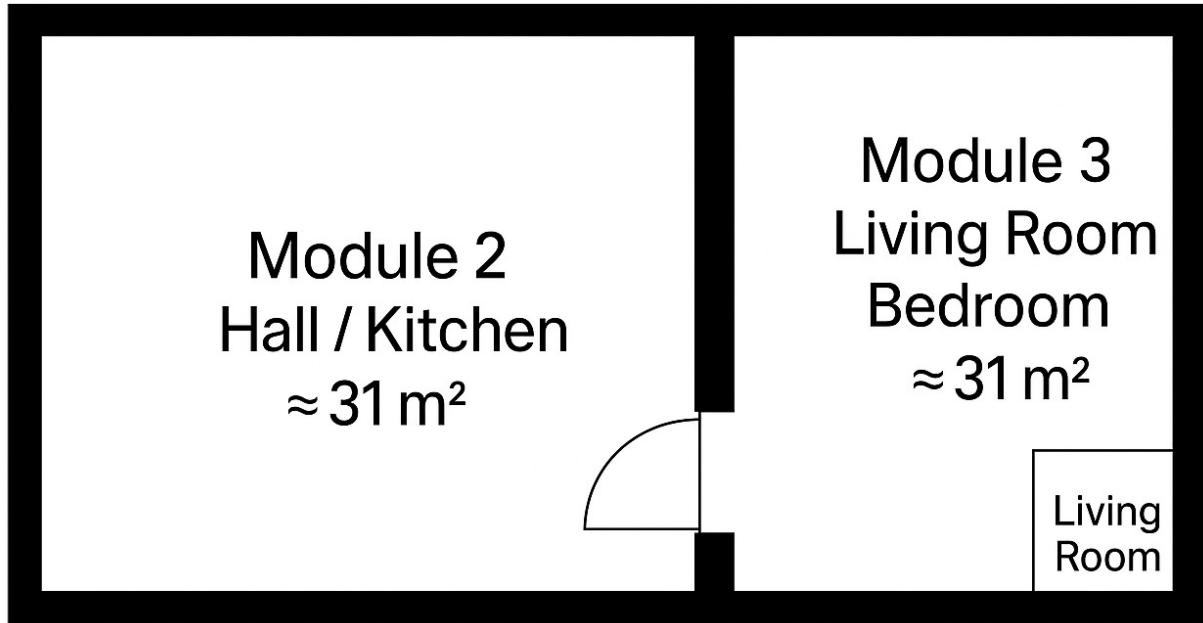
### Module 1 — Entrance Zone (≈30 m²)

- **Garage:** 15 m² (2.4 × 6.3 m)
  - **Corridor:** 6 m long, connecting the garage with the house
  - **Guest WC:** 2 m²
  - **Hall / Foyer:** 7 m²
- ➡ Connected by a door to Module 2

### Module 2 — Hall / Kitchen / Pantry (≈31 m²)

- **Kitchen with island:** 14 m²
  - **Dining area:** 10 m²
  - **Pantry:** 3 m²
  - **Archway (1.6 m wide)** leads to the living area (Module 3)
- ➡ Connected to Modules 1 and 3







Module 2  
 $\approx 30 \text{ m}^2$

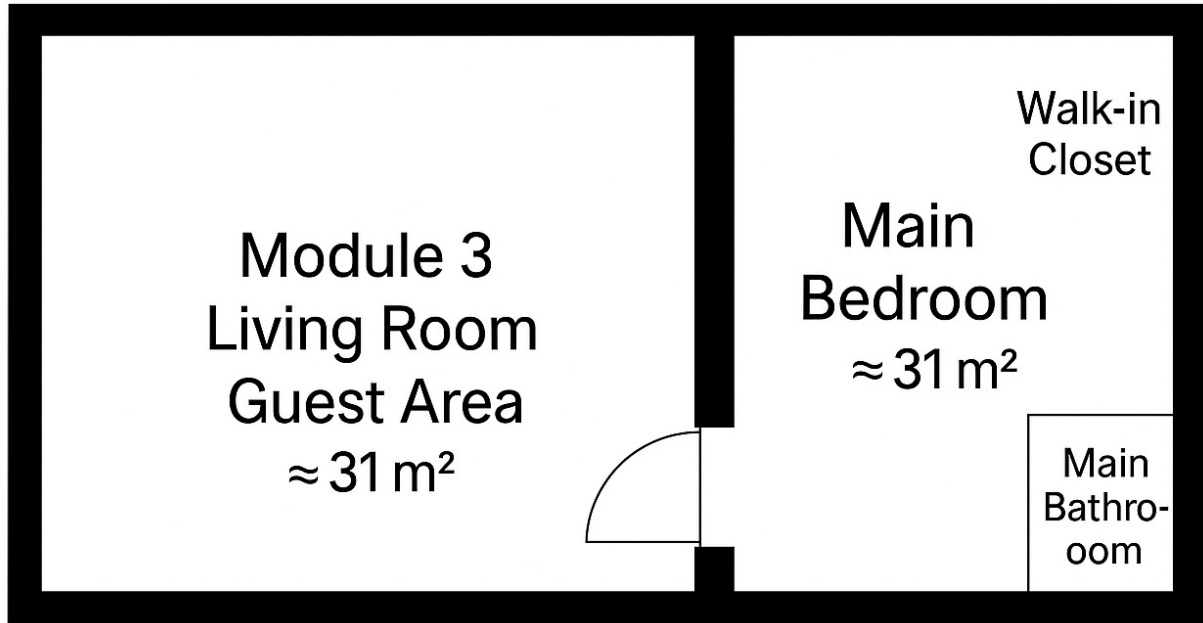
Module 3  
 $\approx 31 \text{ m}^2$

**Module 2 — Hall / Kitchen / Pantry ( $\approx 31 \text{ m}^2$ )**

- **Kitchen with island:**  $14 \text{ m}^2$
- **Dining area:**  $10 \text{ m}^2$
- **Pantry:**  $3 \text{ m}^2$
- **Archway (1.6 m wide)** leads to the living area (Module 3)
-  Connected to Modules 1 and 3

**Module 3 — Living Room / Guest Zone ( $\approx 31 \text{ m}^2$ )**

- **Living room:**  $18 \text{ m}^2$
- **Guest bedroom:**  $9 \text{ m}^2$
- **Closet:**  $2 \text{ m}^2$
- **Bathroom (shower + WC):**  $2 \text{ m}^2$
-  Door to Module 4 (through a small hallway)



Module 4  
≈ 31 m²

Module 4  
≈ 31 m²

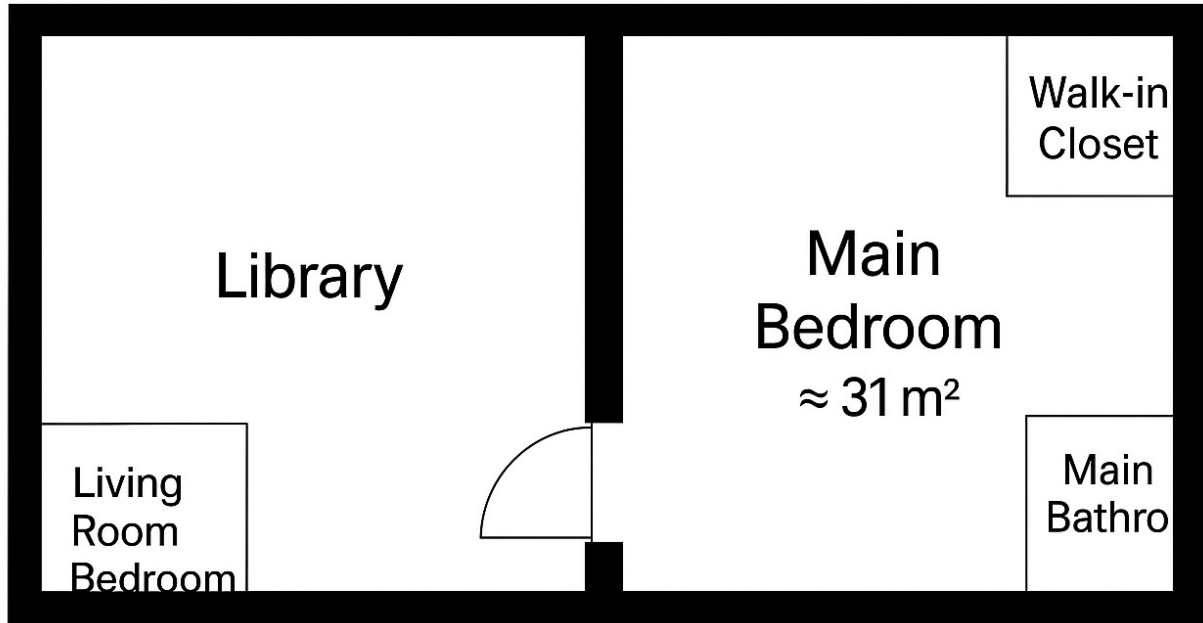
#### Module 3 — Living Room / Guest Zone (≈31 m²)

- Living room: 18 m²
  - Guest bedroom: 9 m²
  - Closet: 2 m²
  - Bathroom (shower + WC): 2 m²
- ➡ Door to Module 4 (through a small hallway)

#### Module 4 — Master Bedroom (≈31 m²)

- Bedroom: 14 m²
  - Walk-in closet: 4 m²
  - Main bathroom (bath, shower, WC, bidet): 8 m²
  - Additional bathroom (shower, bidet): 3 m²
- ➡ Connected to Module 5 (archway from bedroom to library)







Module 5  
 $\approx 31 \text{ m}^2$

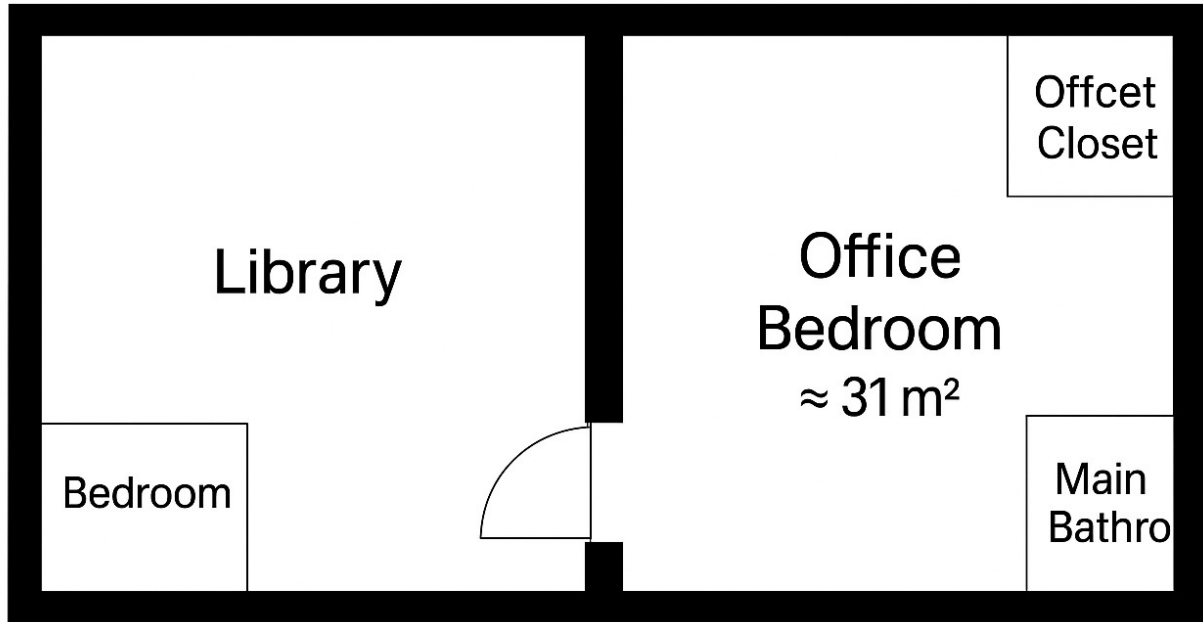
Module 5  
 $\approx 31 \text{ m}^2$

#### Module 4 — Master Bedroom ( $\approx 31 \text{ m}^2$ )

- **Bedroom:**  $14 \text{ m}^2$
- **Walk-in closet:**  $4 \text{ m}^2$
- **Main bathroom (bath, shower, WC, bidet):**  $8 \text{ m}^2$
- **Additional bathroom (shower, bidet):**  $3 \text{ m}^2$
-  Connected to Module 5 (archway from bedroom to library)

#### Module 5 — Library / Bedroom 2 ( $\approx 31 \text{ m}^2$ )

- **Library or study:**  $10 \text{ m}^2$
- **Bedroom:**  $12 \text{ m}^2$
- **Walk-in closet:**  $3 \text{ m}^2$
- **Bathroom (shower + WC):**  $3 \text{ m}^2$
-  Connected by door to Module 6



**Module 5**  
≈ 31 m<sup>2</sup>

**Module 6**  
≈ 31 m<sup>2</sup>

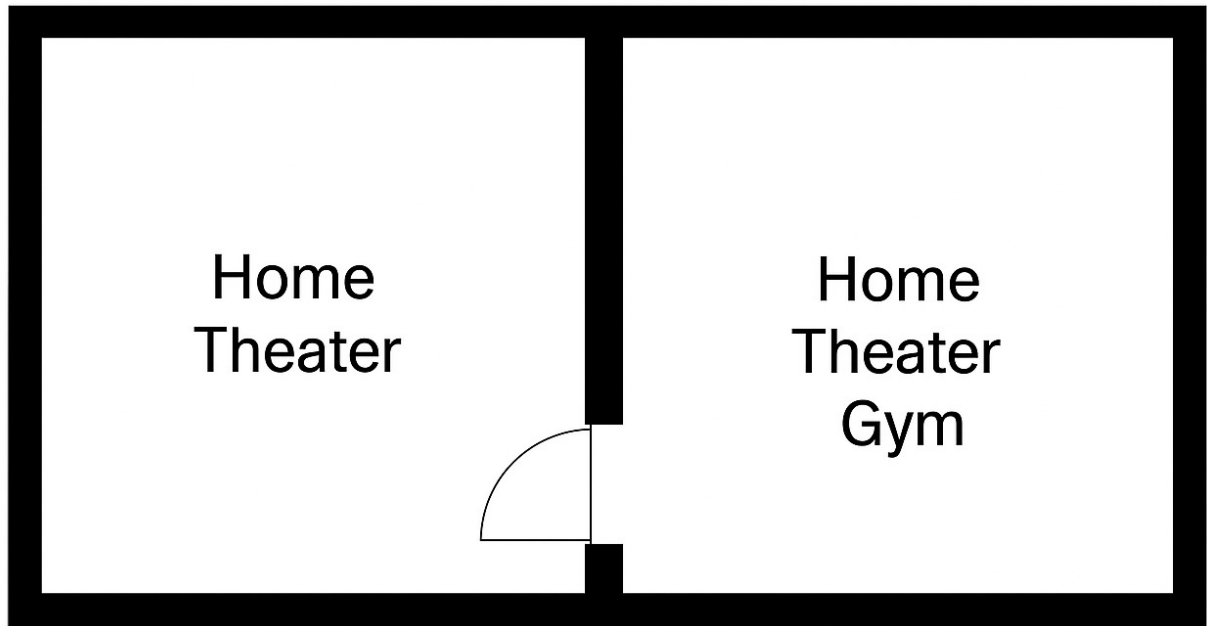
**Module 5 — Library / Bedroom 2 (≈31 m<sup>2</sup>)**

- **Library or study:** 10 m<sup>2</sup>
  - **Bedroom:** 12 m<sup>2</sup>
  - **Walk-in closet:** 3 m<sup>2</sup>
  - **Bathroom (shower + WC):** 3 m<sup>2</sup>
- ➡ Connected by door to Module 6

**Module 6 — Office / Bedroom 3 (≈31 m<sup>2</sup>)**

- **Office:** 10 m<sup>2</sup>
  - **Bedroom:** 12 m<sup>2</sup>
  - **Walk-in closet:** 3 m<sup>2</sup>
  - **Bathroom (shower + WC):** 3 m<sup>2</sup>
- ➡ Door to Module 7





Module 6  
≈ 31 m<sup>2</sup>

Module 7  
≈ 31 m<sup>2</sup>

**Module 6 — Office / Bedroom 3 (≈31 m<sup>2</sup>)**

- **Office:** 10 m<sup>2</sup>
- **Bedroom:** 12 m<sup>2</sup>
- **Walk-in closet:** 3 m<sup>2</sup>
- **Bathroom (shower + WC):** 3 m<sup>2</sup>

➡ Door to Module 7

---

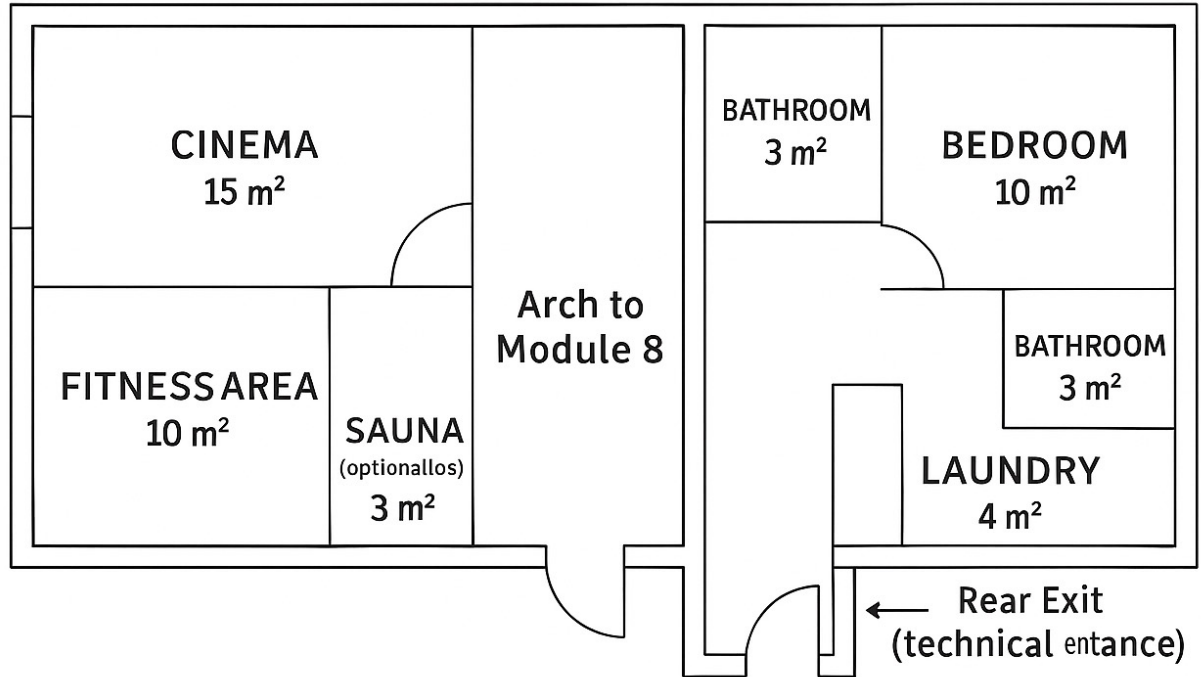
**Module 7 — Home Theatre / Gym (≈31 m<sup>2</sup>)**

- **Cinema room:** 15 m<sup>2</sup>
- **Fitness area:** 10 m<sup>2</sup>
- **Optional sauna:** 3 m<sup>2</sup>

➡ Archway to Module 8

## MODULE 7 – CINEMA / FITNESS ROOM (~31 m<sup>2</sup>)

## MODULE 8 – BEDROOM 4 UTILITY (~3 m<sup>2</sup>)



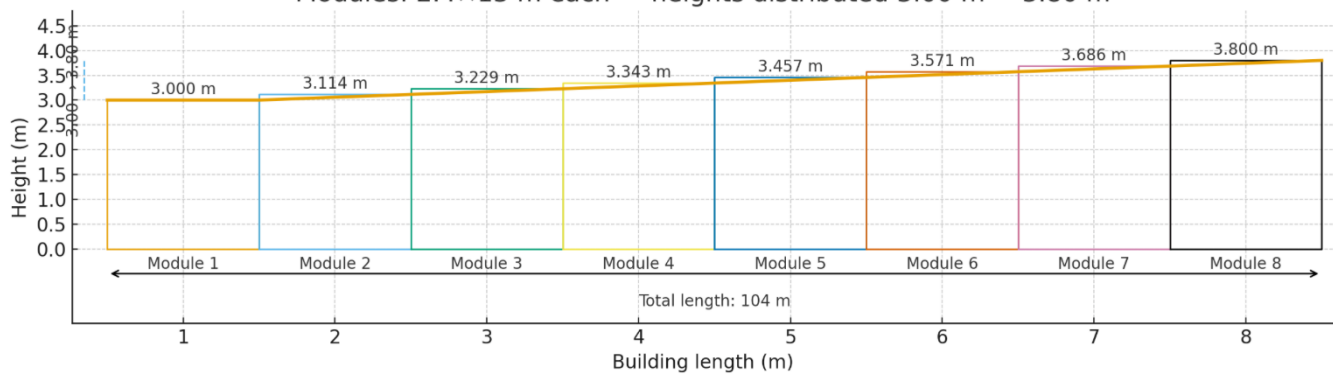
### Module 7 — Home Theatre / Gym (≈31 m<sup>2</sup>)

- **Cinema room:** 15 m<sup>2</sup>
- **Fitness area:** 10 m<sup>2</sup>
- **Optional sauna:** 3 m<sup>2</sup>
- ➡ Archway to Module 8

### Module 8 — Bedroom 4 / Utility Block (≈31 m<sup>2</sup>)

- **Bedroom:** 10 m<sup>2</sup>
- **Closet:** 3 m<sup>2</sup>
- **Bathroom:** 3 m<sup>2</sup>
- **Laundry room:** 4 m<sup>2</sup>
- **Storage / technical area:** 6 m<sup>2</sup>
- ➡ Exterior door (back / service exit)

Schematic elevation: sloped roof across 8 modules  
Modules: 2.4×13 m each — heights distributed 3.00 m → 3.80 m



Choose the main color palette of your home with energy in mind!

## Marble and color



## Pastel, soft



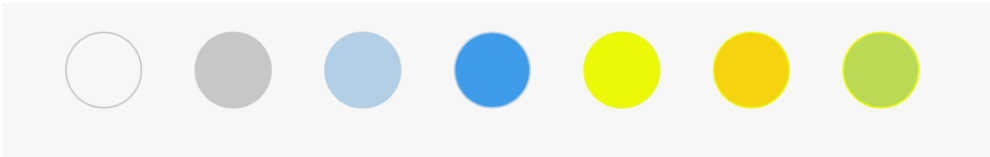
Pastel, gray



Pastel active



Constructor







- A private home from 250 m<sup>2</sup> built to the Passive House Standard



- An equivalent area within a shared commercial property (5,000 m<sup>2</sup>)



- Solar power station 35 kW under the SEG Programme (Smart Energy Grid Programme);

